

Relaunching Enterprises through Workers' Innovation and New Dynamics

OBJECTIVES

The REWIND project aims to support and boost the revival of SME through the acquisition process by employees for continuing the activity under the cooperative model, by supporting a favourable ecosystem.

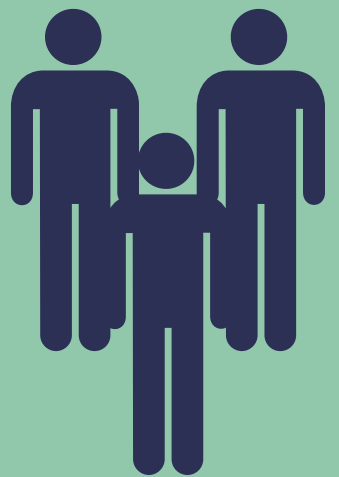
RESULTS



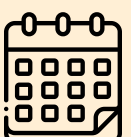
- Training plans for VET professionals
- e-Learning platform and "Company & Management" online laboratory for learners/employees interested in starting/taking over a business
- Interactive, Collaborative and Co-working Portal aimed at VET professionals
- Guidelines for Democratic and Participatory Enterprise for decision makers, politicians and administrators that can positively influence the bottom-up experiences of employed women and men.

TARGET GROUP

- VET professionals: trainers, teachers, researchers, consultants, coaches, administrators involved in supporting entrepreneurship
- Employees and learners: whether university students, from initial or continuing education or even low skilled who are interested in the idea of starting a business)
- Other stakeholders: decision makers, social partners, professionals and employers, chambers of commerce, etc



Project 2022-1-KA220-VET-000088929
Erasmus+ - Call : 2022 - Round 1 - Action type : Cooperation partnerships in vocational education and training (KA220-VET)



11/2022 - 04/2025



PARTNERS:

- SC'OPARA (France)
- SPEHA FRESIA SC (Italy)
- IDEC (Greece)
- DISRUPTIA, S.L.U (Spain)
- ELDERBERRY AB (Sweden)
- CEC (Belgium)